

TONNEAU COVER FITTING INSTRUCTION

LDV T60 MEGA TUB

WITH SPORT BAR AND OVER RAIL LINER

October 2017 – Current
Part No: ATC01360

BASIC TOOLS REQUIRED

Drill, 4mm Drill Bits, Rivet Gun, Marking Pencil/ Pen

CONTENTS

- 1 x Tonneau Cover
- 2 x Tonneau Support Bars
- 1 x Aluminium Ropetrack (1565mm)
- 1 x Aluminium Tailgate (1400mm)
- 2 x Rear Side Aluminium (1000mm)
- 2 x Front Side Aluminium (515mm)
- 4 x Bar Brackets
- 25 x Rivets
- 5 x Rope Hooks
- 1 x Shock Cord
- 2 x Washers

1. INSTALLATION PROCEDURE

1. Sit the flat side of the rope track on the top front edge of the tub with the 'C' channel facing forward, towards the cab.
2. Align the front of the 'C' channel with the outside edge of the tub. Centralise the rope track. **Figure 1**
3. With a 4mm drill bit, Drill 5 x 4mm holes evenly spaced in the rope track and into the top edge of the tub.
4. Place a 4mm rivet in each hole as it is drilled, but do not rivet.
5. Once all holes have been drilled, remove the rivets and rope track and clean any swarf away.
6. Apply a bead of silicone to the flat face of the rope track (the edge that comes in contact with the tope edge of the tub) and place the rope track back in position. Rivet into place. **Figure 2**
7. The short Rails (515mm) need to be centralised between the sports bars.

Figure 1

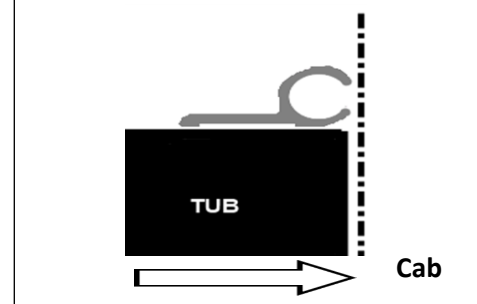
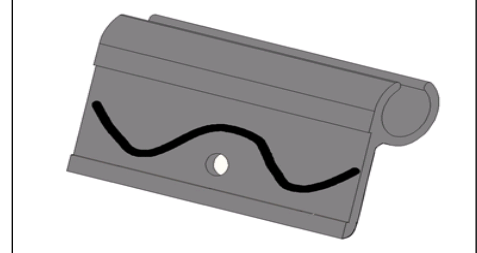


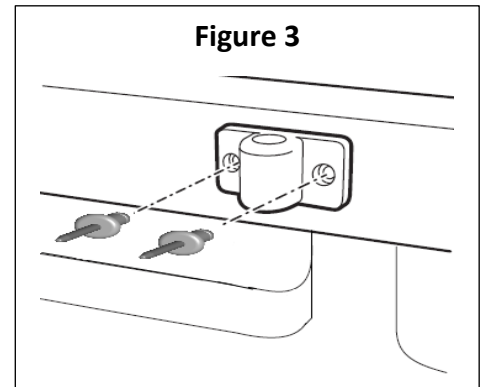
Figure 2



8. Slide each the profile down keeping it square with the top of the tub. From the front edge of the rail, 27mm from the bottom edge, measure and mark the following locations:
 - 50mm, 465mm and 497mm.

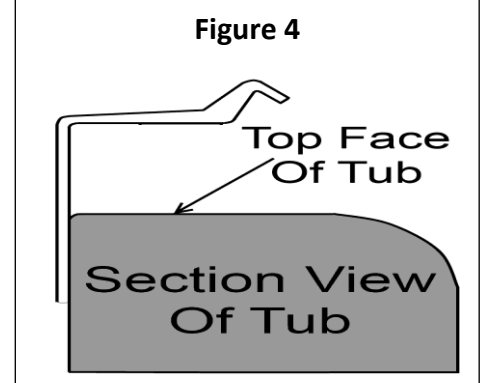


9. Drill each of the marked locations through the aluminium and into the inside edge of the tub. And then rivet into 50mm.
10. Attach the first bar bracket by placing a 4mm rivet through each hole of the bracket and rivet into the remaining holes, 465mm and 497mm. **Figure 3**
11. Ensure the Rear Rails (1000mm) are positioned behind the rear of the sports bars (the notch to the rear).

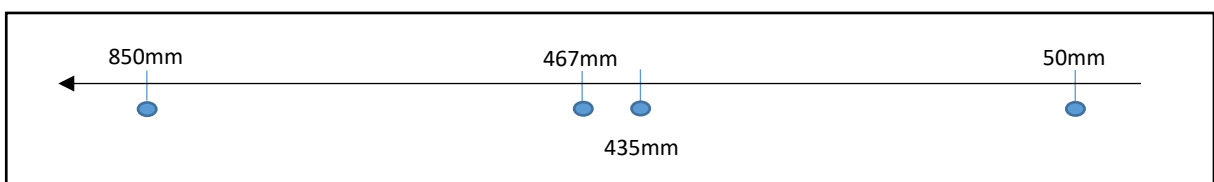


NOTE: Side Rails need to sit behind Tie Downs, loosen Tie Downs so that the rails can sit flush with the side of the tub.

12. Slide the profile down keeping it square with the top of the tub. **Figure 4**
13. From the front edge of the rail, 27mm from the bottom edge, measure and mark the following locations:

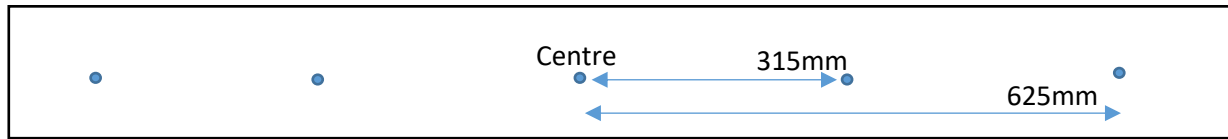


- 50mm, 435mm, 467mm and 850mm

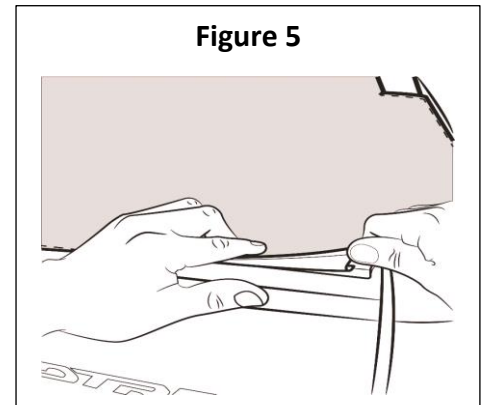


14. Drill each of the marked locations through the aluminium and into the inside edge of the tub. And then rivet into 50mm and 850mm.
15. Attach the second bar bracket by placing a 4mm rivet through each holes of the bracket and rivet into the middle two holes.
16. Repeat those instruction 7 to 16 for the other side of the tub.
17. Multi-fit support bar refer to section 2.
18. Measure and mark the centre of the tailgate and 315mm and 625mm from the centre of the rail, 30mm from the bottom edge.

19. Position the aluminium in the centre of the tailgate, so that it is sitting square and flush with the top surface of the tailgate.



20. Drill through each of the holes in the Aluminium rail into the tailgate. Rivet the tailgate rail to the tailgate to complete the attachment.
21. To attach the cover, fit the front of Tonneau cover ("**J**" retainer) into the Rope Track channel. Drape the cover under the sport bar and across the tub.
22. Clip the side plastics under the aluminium profile first using the plastic's edge in the corners to stretch the cover.
23. Clip the plastic on the tailgate under the aluminium profile last.
24. To remove cover once fitted peel cover away from aluminium clip in rail by peeling away from the edge of the plastic. **Figure 5**
25. **IMPORTANT:** Do not use cover corners to lift. Always use plastic edges.



2. MULTI-FIT SUPPORT BAR

The Aussie Tonneau Multi - Fit Support Bar is designed to fit almost all Utes on the Market, from Suburu Brumbys to Cab Chassis aluminium trays.

2.1 BASIC TOOL REQUIRED

- Drill, 4mm drill bit

2.2 MULTI-FIT SUPPORT BAR CONTENTS

- 1 x hollow bar centrepiece
- 2 x grub screws
- 2 x solid bar end piece

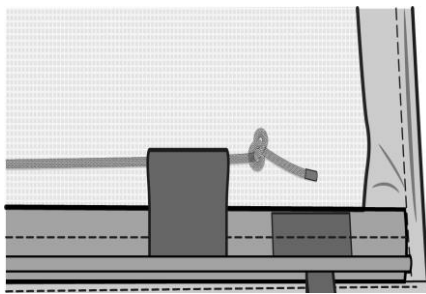
2.3 FITTING MULTI-FIT BAR

1. Insert solid bar pieces into either end of hollow tube. Adjust bar so it fits between bar bracket holders with the holes facing to the ground (so the grub screws don't rub against the tonneau), as shown above and then with a white pencil make a mark through the small holes of the hollow bar onto the solid ends. This is where you will drill a hole to the depth of about 1-2mm (do not go any further)
2. Join the pieces back together and screw grub screws through the hollow bar into the holes that you drilled. **Make sure you do not over tighten the grub screws.** Refit the bar. You may kink the bar in the middle to give it some extra height to assist with water runoff.

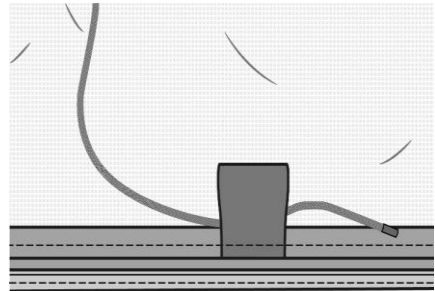
3. HOW TO FIT INTERNAL ELASTIC SHOCK CORD

- Tie a knot in one end of shock cord.
- Pull shock cord through all plastic hooks.
- Feed the shock cord through loops on the cover.
- Tie a knot at the other end
- Space the hooks as required
- Use washers to tie off rope

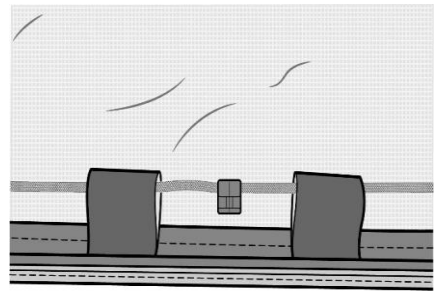
Tie a knot each ends of rope



Feed cord through all loops



Hook placement and direction



Using Internal Elastic Shock Cord:

The plastic clips on the internal shock cord can be hooked into the aluminium extrusions so that the cover can still be secured with larger loads in the tub.