

TONNEAU INSTALLATION INSTRUCTION

Mitsubishi MQ Triton Dual Cab
With Headboard, No Sports Bar

July 2015 – Current

Part number: ATC01111

Package includes	
1 X Tonneau cover	2 x Bar Brackets
1 x Tonneau Support Bar	32 x Rivets
1 x Flat Aluminium + Rope Track - 1462mm	1 x Tailgate Extrusion (1400mm)
2 x Dowel	2 x Side Extrusion (1395mm)
1 x Fitting Instructions	1 X Shock Cord
	4 x Rope Hooks
	2 x M8 Washers

Please note before Fitment:

- Read all instructions prior to fitting the Tonneau cover.
- Check that the fitting kit is complete before beginning the installation.
- If replacing a previously fitted Aussie Tonneaus Cover the front rope track must be removed from the vehicle.
- If replacing any other cover all hardware must be replaced with hardware supplied.

Check the contents of the kit prior to fitment.

1. TONNEAU COVER FITTING

NOTE Read entire instructions prior to start.

1.1 BASIC TOOL REQUIRED

Drill, 4mm Drill Bit, Rivet Gun, Marking Pencil / Pen, Straight Edge, Silicon

1.2 TONNEAU COVER INSTALLATION PROCEDURE

Step 1: Install the Rope Track

- a) Place the 2 pieces of dowel in the ends of the rope track. Ensure the flat side of the aluminium is the surface positioned against the face of the headboard. With the Dowels inserted approx. 50% in to the rope track ends rest the aluminium rope track on the side rails.
- b) While pushing against the rope track use a 4 mm drill bit to drill 5 holes, one into each upright of the headboard. The first hole at each end should be 25mm from the edge of the aluminium rope track.
- c) Squeeze silicon along the bottom and side edges of the flat aluminium.
- d) Place a rivet in each drilled hole and pop rivet aluminium rope track into place. Squeeze silicon along the bottom and side edges of the aluminium to fill the gap between the tub and aluminium.



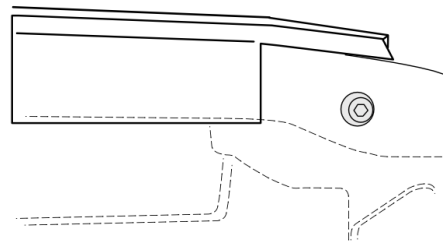
Step 2: Attach Side Aluminium Rails

- a) Take a side extrusion and butt it up against the dowel which is in the rope track (See Figure 3) Ensure that you have the correct side aluminium that matches the contour of the tub's rear (Figure 4). With a non-permanent pen mark where the end of the extrusion will meet the top edge of the tub (See Figure 4)

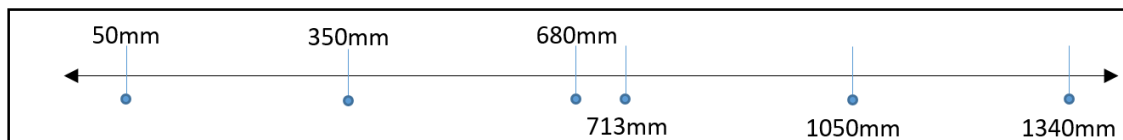
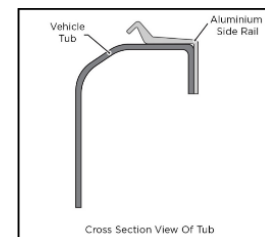
Figure 3: Front of side extrusion



Figure 4: Depiction Rear of tub



- b) Ensure the aluminium is flush with the top of the tub. From the front edge of the rail measure and mark the following locations.



FRONT

BACK

- c) Whilst on the car, drill through these locations and into tub, using 4.5 drill bit. **NOTE:** Repeat for both sides of car
- d) Attach the bar bracket by placing a 4mm rivet through each hole (160mm & 193mm) of the bracket and into the centre holes in the rail. (See Figure 5)

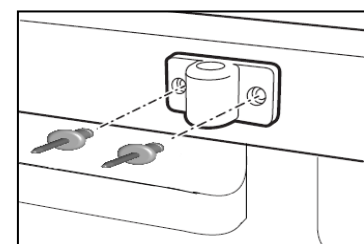


Figure 5

- e) Rivet the remaining holes attaching the aluminium rail to the side of the car's tub

Step 6: Fit the support bar

- a) Insert Support Bar into bar brackets.

Step 7: Install the Tailgate Extrusion

- a) With a non-permanent pen mark the centre of the aluminium extrusion and the centre of the tailgate (See Figure 8)
- b) Measure and mark the below 4 rivet locations from both ends aluminium on the flat surface 5mm up from edge.

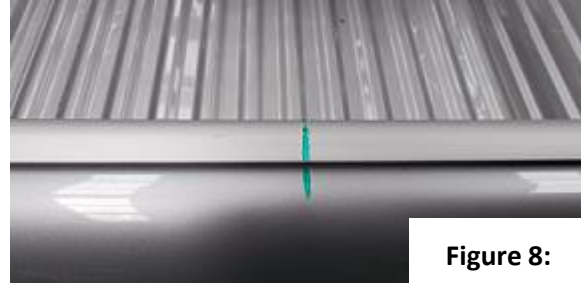
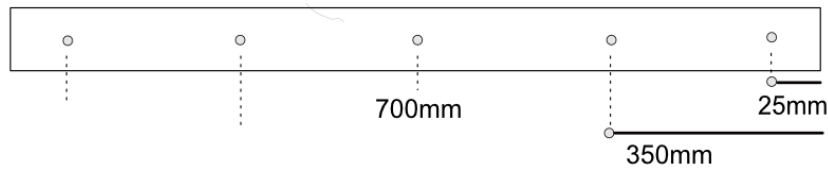
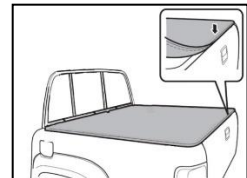


Figure 8:



- a) Place the extrusion centred, flat on to the tailgate.
- b) Drill and rivet the aluminium to the tailgate using the positions from step 14.
- c) To attach the cover, slide the front of the cover into the Rope Track channel and drape the cover across the tub
- d) Using the pull loops, clip the side plastics under the aluminium profile first using the pull loops in the corners to stretch the cover.
- e) Lastly, clip the plastic on the tailgate under the aluminium profile.
- f) To remove cover once fitted peel cover away from Aluminium clip in rail by peeling away from the edge of the plastic.

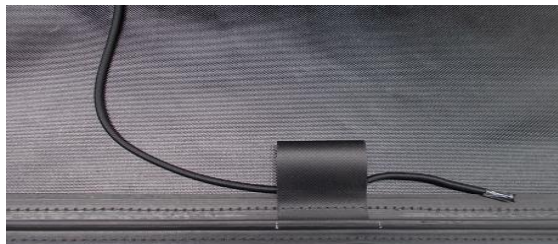
NB: Do not use cover corners to lift. Always use plastic edges.



- Tie a knot in one end of the shock cord.
 - Pull shock cord through all plastic hooks.
 - Feed the shock cord through loops on the cover.
 - Tie a knot at the other end.
 - Space the hooks as required.
- Use washers to tie off rope.



Feed cord through all loops



Hook placement and direction

