

TONNEAU COVER FITTING INSTRUCTION

Ford Falcon FG

June 2008 – July 2016

Part Number: ATB01147

1. TONNEAU COVER FITTING

NOTE: Read entire instructions prior to start.

1.1 BASIC TOOL REQUIRED

Drill, 4mm Drill Bit, Tape Measure, Rivet Gun, Marking Pencil / Pen, Clear Silicone / Silicone Gun

1.2 CONTENTS

1 x Tonneau Cover

4 x Bar Brackets

2 x Tonneau Support Bar

28 Rivets

20 x Rope Buttons

1.3 TONNEAU COVER INSTALLATION PROCEDURE

1. To fit the bar brackets, measure 640mm and 1240mm back from the outside front edge of the tub and place them as shown in **Figure 1**. Drill and rivet using two large rivets for each Bar Bracket. Install the support bar according to the supplied instructions.



Figure 1:
Bar Brackets placed
640mm & 1240mm
from front of tub.

2. Fit the front of the Tonneau Cover to the front of the Ute tub placing the three Plastic Retainers (Fitted on the Tonneau Cover) on to the Metal Lip on the Steel Body (the lip 30mm down from the top of the tub) between the cabin and the Ute Body. (Behind rear windscreen).
3. To fit buttons to the tailgate measure 80mm down from the bottom edge of the lip of the tub (Shown in **Figure 2**) at both sides of the tailgate and using a non-permanent marker mark

these positions. Using a straight edge or string line, draw a line between these positions, so that the line extends across the width of the tailgate.

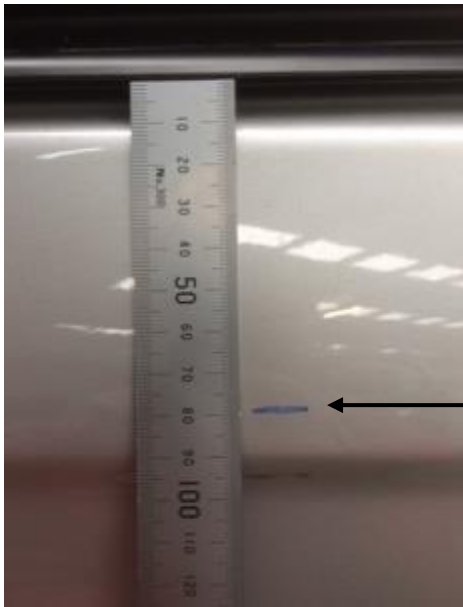


Figure 2:
Measure and mark 80mm
down from bottom edge of lip.

4. Drape the cover over the support bars and centre it. Working from the centre two bunjis out mark the location of each bunji on the line drawn in step 3.
5. As you mark the location of each button drill and rivet buttons along the line, attaching each bunji to the buttons as you go. **See Figure 3**



Figure 3:
Working from centre out
mark, drill and rivet each
button and attach bunjis
as you go.

6. To fit buttons to the sides of the tub start by drawing a line 80mm down from the bottom edge of the lip of the tub, just like on the tailgate in Step 3. But this time from the front to the back of the tub.
7. Locate the rear Passenger Side bunji on the line, then mark, drill and rivet a button in place. Attach bunji and repeat for the rear Drivers Side bunji.

8. Continue attaching buttons along the line in line with each bunji, working from the rear to the front and alternating from Passenger Side to Drivers Side. **See Figure 4**



Figure 4:

Working from the rear to front of each side, drill and rivet each button and attach bunjis, alternating sides as you go.

2. CARING FOR YOUR TONNEAU

Apply bee's wax or Dri-lube to stitching a few times a year, as this will maintain the tonneau's waterproofing ability and prevent the stitching from degrading. Use a mild detergent and soft scrubbing brush to clean tonneau.

Never drive without tonneau support bars in place as flapping can cause a delaminating effect on the material.

"Tonneau is not designed to be used as a load restraint"

3. MULTI-FIT SUPPORT BAR

The Aussie Tonneau Multi - Fit Support Bar is designed to fit almost all Utes on the Market, from Suburu Brumbys to Cab Chassis aluminium trays.

3.1 BASIC TOOL REQUIRED

Drill, 4mm drill bit

3.2 MULTI SUPPORT BAR CONTENTS

- 1 x hollow bar centrepiece
- 2 x grub screws
- 2 x solid bar end piece

3.3 FITTING MULTI SUPPORT BAR

1. Insert solid bar pieces into either end of hollow tube. Adjust bar so it fits between bar bracket holders with the holes facing to the ground (so the grub screws don't rub against the tonneau), as shown above and then with a white pencil make a mark through the small holes of the hollow bar onto the solid ends. This is where you will drill a hole to the depth of about 1-2mm (do not go any further)

2. Join the pieces back together and screw grub screws through the hollow bar into the holes that you drilled. Make sure you do not over tighten the grub screws. Refit the bar. You may kink the bar in the middle to give it some extra height to assist with water runoff.