

TONNEAU COVER FITTING INSTRUCTION

PART NUMBER: ATB01026

FORD PX RANGER SUPER CAB 2011 – CURRENT

BASIC TOOL REQUIRE

- Rivet gun, Drill, 4.5mm Drill Bit, Measuring Tape, Silicon Sealant, Anti-Corrosive Primer, Marking Pencil

CONTENTS

- | | |
|---|---------------------|
| - 1 x Tonneau Cover | - 2 x Bar Brackets |
| - 1 x Support Bar | - 30 x Rivets |
| - 3 x Aluminium Ropetrack (403mm Long) | - 18 x Rope Buttons |
| - 1 x Fitting Instruction | - 4 x Dowels |
| - 2 x Aluminium Sealing Angles (100mm Long) | |

1. INSTALLATION PROCEDURE

NOTE Remove swarf and apply Rust Inhibitor to all drilled holes prior to riveting.

1. Remove the front bolts from the sports bar brackets on both sides of the ute.
2. Place a sealing angle between the tub and the bracket and using a straight edge level the seal plates and replace and tighten the bolts Refer figures 2, 3 & 4.
3. Using two pieces of dowel, join the 3 aluminum rope tracks together. Place the other 2 pieces of dowel in the ends of the now joined rope track and sit the end dowels on the seal plates to position the rope track. **See Figure 1.**

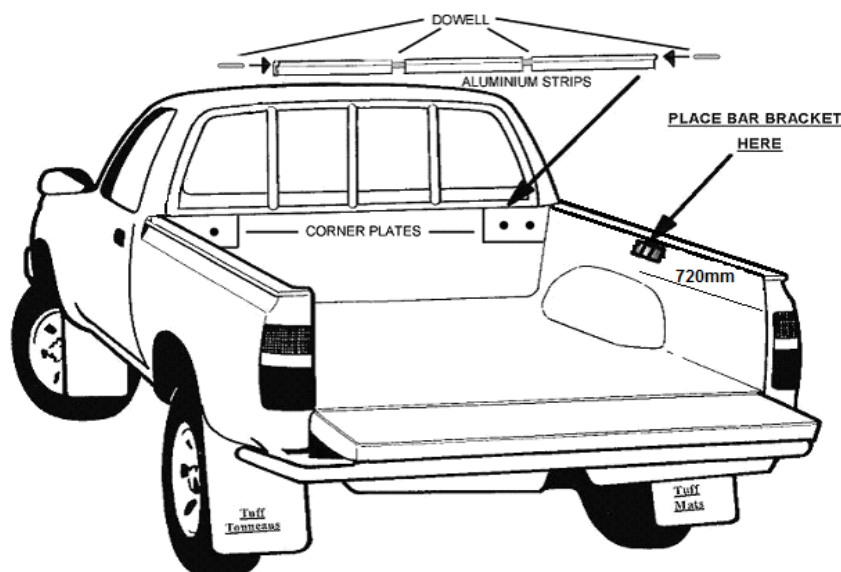


Figure 1

4. Using a 4.5 mm drill bit, drill 6 holes 50mm from the end of each of the aluminum rope tracks into the front of tub.
5. Once all the holes have been drilled, remove the dowelling pieces. Squeeze silicon along the back of the rope tracks and pop rivet into place.

6. Mark a position 890mm from the inside edge of the tailgate of tub towards the front. Centrally locate the bar bracket over this position and the top edge of the bracket 5mm down from the top lip of the tub and drill and rivet bracket into place.. Repeat for other side of tub. Fit tonneau support bar to bar brackets.
7. Slide the front of the tonneau cover through the aluminum rope track section. Position the self-adhesive Velcro strip on the tub as shown in **Figure 2** so that it aligns with the Velcro strip sewn into the tonneau cover. Repeat for other side of tub. **Note:** Clean this area with soapy water or methylated spirits prior to adhering the strips to ensure the surface is free from any dirt, oil and grease.

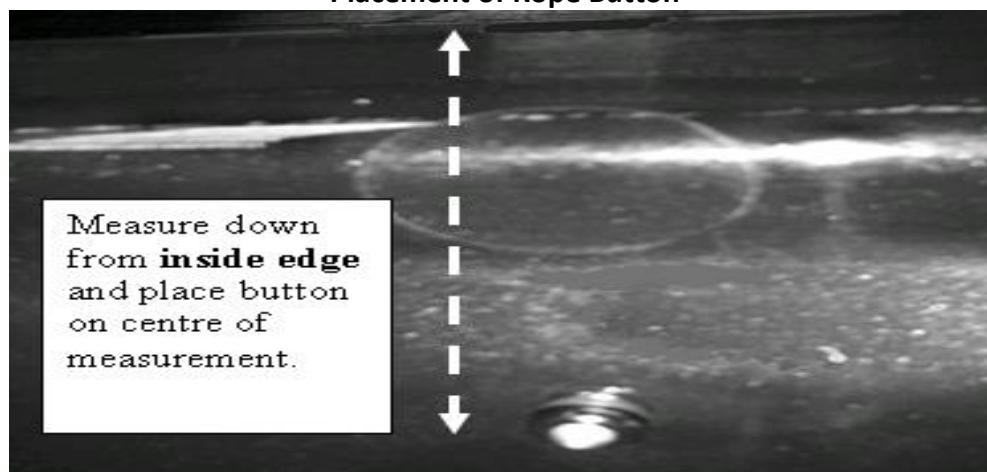
Figure 2, 3 & 4

Placement Of Side Sealing Angel



8. To fit the rear rope buttons, ensure the cover is centralized with the **tailgate** and line up each bunji vertically, measure 474mm up from the **bottom edge of the tailgate** to the centre line of each bunji and using a 4mm drill, drill and rivet each button into position.
9. To fit the **side panels** rope buttons line up each bunji vertically, starting from the rear bunji, closest to the tailgate, measure 145mm down from the **inside edge** See **Figure 5** drill and rivet button alternating from one side to other side of the tub.

Figure 5
Placement of Rope Button



10. For the next button, measure 150mm down from the **inside edge** drill and rivet button alternating from one side to other side of the tub. For the next button, measure 155mm down from the **inside edge** drill and rivet button alternating from one side to other side of the tub. For the remaining side buttons (except the very front bunji), measure 160mm down from the **inside edge** drill and rivet button alternating from one side to other side of the tub and for the last button, measure 160mm down from the **inside edge** and 50mm back from the cabin end of the tub (so the bunji is on an angle pointing forward) drill and rivet button on both sides of vehicle.
11. Attach the tonneau cover to all rope buttons.
12. Fitment is complete.

2. CARING FOR YOUR TONNEAU

- Apply bee's wax or Dri-lube to stitching a few times a year, as this will maintain the tonneau's waterproofing ability and prevent the stitching from degrading. Use a mild detergent and soft scrubbing brush to clean tonneau.
- **Never drive without tonneau support bars in place as flapping can cause a delaminating effect on the material.**

"Tonneau is not designed to be used as a load restraint"

3. MULTI-FIT SUPPORT BAR

The Aussie Tonneau Multi - Fit Support Bar is designed to fit almost all Utes on the Market, from Suburu Brumbys to Cab Chassis aluminium trays.

3.1 BASIC TOOL REQUIRED

- Drill, 4mm drill bit

3.2 MULTI-FIT SUPPORT BAR CONTENTS

- 1 x hollow bar centrepiece
- 2 x grub screws
- 2 x solid bar end piece

3.3 FITTING MULTI-FIT BAR

1. Insert solid bar pieces into either end of hollow tube. Adjust bar so it fits between bar bracket holders with the holes facing to the ground (so the grub screws don't rub against the tonneau), as shown above and then with a white pencil make a mark through the small holes of the hollow bar onto the solid ends. This is where you will drill a hole to the depth of about 1-2mm (do not go any further)
2. Join the pieces back together and screw grub screws through the hollow bar into the holes that you drilled.

Make sure you do not over tighten the grub screws. Refit the bar. You may kink the bar in the middle to give it some extra height to assist with water runoff.